

# VECTOR

GEOMATICS LAND SURVEYING LTD.

Serving Western Canada Since 2006





## Professional Land Surveying

Vector Geomatics employs qualified and experienced BC and Alberta land surveyors with 10-25 years experience in the survey industry. Our field crews are experienced in surveying throughout Alberta and BC, and are trained in the use of ATVs, UTVs, GPS, and conventional survey methods. Our crews are prepared and ready.

**Next day service? Not a problem.**

## Drafting Services

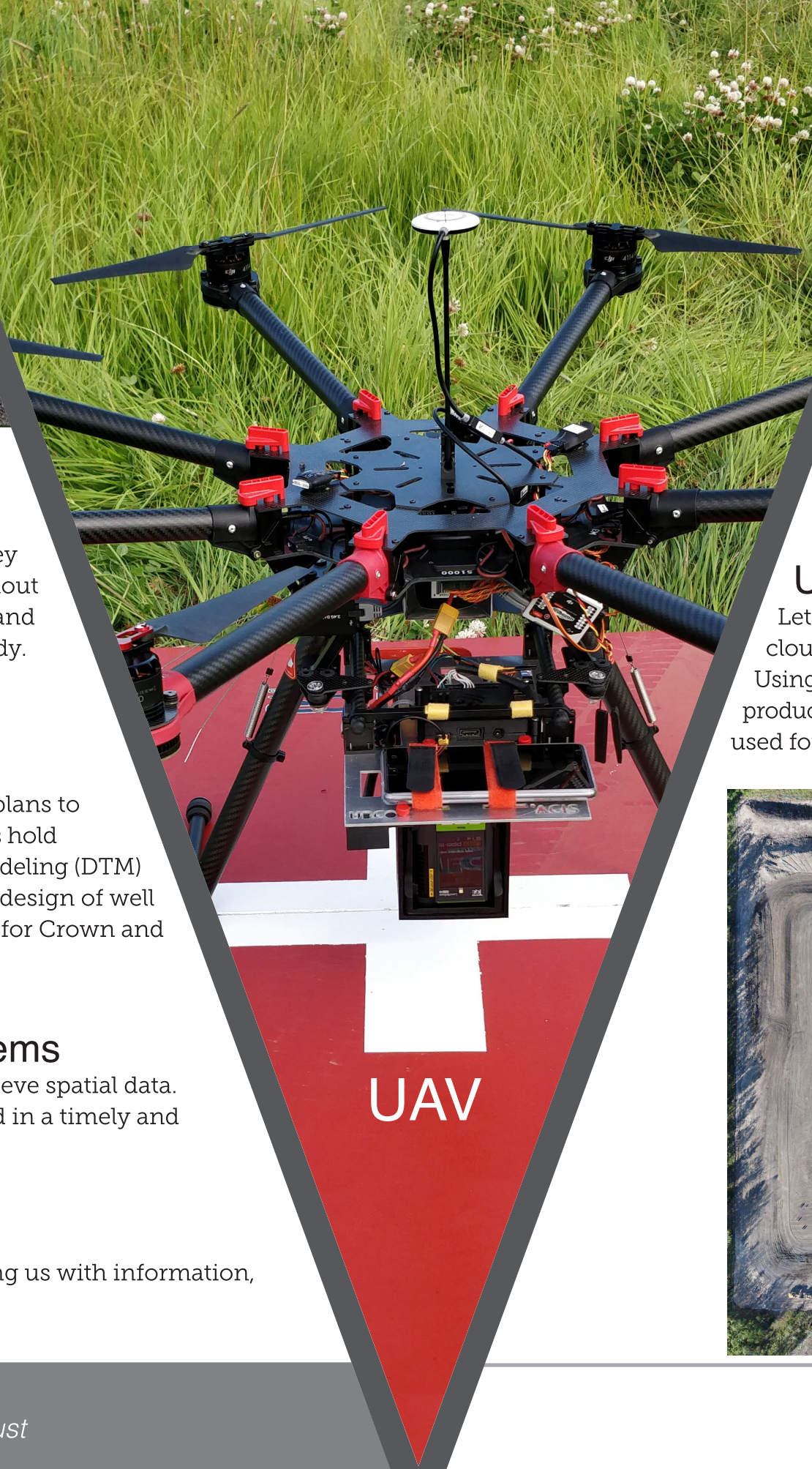
Our extensive history in legal surveying provides high quality plans to protect your interests with government regulations. Our drafters hold specific training and are experienced in using Digital Terrain Modeling (DTM) related calculation and design software. We offer DTM's for the design of well and plant site locations, as well as legal and construction plans for Crown and private land applications.

## Mapping & Geographic Information Systems

We use the latest software to accurately convert, store, and retrieve spatial data. Our final products are robust, visually appealing, and generated in a timely and cost-effective manner.

## First Nations Partnerships

We utilize local independent First Nations contractors, providing us with information, access, transportation, accommodation and services.



UAV

**“Safety is not just our standard, it’s our mindset.”**

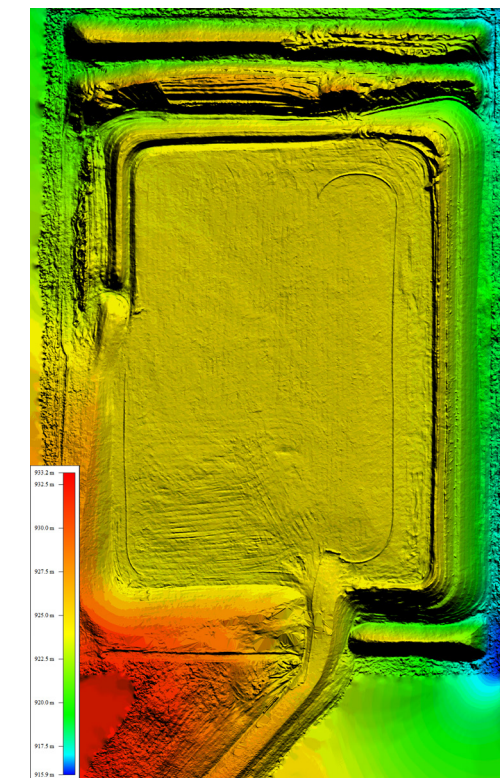
We are committed to the safety of our employees, contractors and clients. We diligently review the latest industry safety standards and our own internal practices to further develop our safety program and training.

Vector Geomatics’ Safety Program undergoes rigorous independent audits to maintain the latest safety standards and guidelines in the industry. Vector is registered in ISNetworld and ComplyWorks.

## UAV Surveying

Let our UAV Surveying department produce orthophotos, point clouds, 3D models and digital elevation models for your next project.

Using the latest technology and photogrammetry software we are able to produce very accurate detailed photos, such as those below, that can be used for measuring and volume calculations.



# Leader in Geomatics

Vector Geomatics Land Surveying Ltd has been providing clients with professional land surveying services since its inception in 2006 and has become a leader in Geomatics in Western Canada. Through the dedication and support of our industry clients as well as our experienced staff, Vector Geomatics has been able to continually develop new products and services to meet the needs of our industry.

## Urban & Municipal Surveying

Vector Geomatics diverse team of professional land surveyors bring decades of experience and professional expertise to Civil and Municipal Survey projects by working with local planning authorities from proposed subdivision to final registered plans.

## Remote & Rural Surveying

We know how important the surveying process is, and our highly experienced and knowledgeable staff bring decades of expertise to your British Columbia and Alberta surveying projects. We're experienced in servicing both large and small projects and we are eager to assist you on your next project.

## Our Survey Services Include:

- Large Linear Right of Ways
- Engineering and Design Surveys
- Subdivision, Easements, and Covenants
- Underground Facility Location
- LIDAR Design & Machine Control Design
- Digital Terrain Mapping
- Deformation Monitoring Surveys
- 3D Laser Scanning Surveys
- UAV Photogrammetry Surveys
- Construction Layout Surveys



**Industrial and  
Energy Surveys**



**GIS and  
Route Planning**



**Crown and  
Freehold Expertise**

**Jason Whale, BCLS, CLS  
President and CEO**

Box 6428 6884 Airport Road  
Fort St John, BC V1J 4H8, Canada  
T 250-785-7474

**Kevin Grenkie, ALS  
Branch Manager Calgary**

Suite 100 1300 – 8th Street SW  
Calgary, AB, T2R 1B2, Canada  
T 403-452-0942

**Tyler Fox, ALS, BCLS, P.Eng  
Branch Manager Kelowna**

170 1855 Kirschner Road  
Kelowna, BC, V1Y 4N7, Canada  
T 250-868-0172

*Professional Geomatics You Can Trust*  
**vectorgeomatics.com**

